



SPDC

SCHOOL OF PLANNING, DESIGN AND CONSTRUCTION

IMPACT BOOK 2025-26

CONSTRUCTION MANAGEMENT • INTERIOR DESIGN • LANDSCAPE ARCHITECTURE
URBAN & REGIONAL PLANNING • NATIONAL CHARRETTE INSTITUTE




SPARTANS

BUILT TO LEAD

The School of Planning, Design and Construction (SPDC) at Michigan State University is **deeply aligned with MSU's land-grant mission**, which emphasizes transforming lives and advancing knowledge through outstanding education, research, and community engagement to benefit individuals and communities.

As the **only unit dealing with natural, built and virtual environments**, SPDC offers nine degree programs from four accredited academic programs. SPDC is uniquely positioned to address critical societal, economic and environmental challenges while contributing significantly to MSU's mission and the state's prosperity.





MISSION

We advance the knowledge, prepare innovative leaders, and support the practice of planning, design, and construction.

VISION

We collaborate to create sustainable and healthy built, natural, and virtual environments.



STRATEGIC PLAN

2025-30

ELEVATING STUDENT SUCCESS & ENGAGEMENT

- Integrate innovative teaching methods; interactive, experiential, and hands-on learning opportunities; and real-world problems through community engagement.
- Implement targeted recruitment strategies to attract diverse students and enhance support structures to improve student retention and success.

SUPPORTING FACULTY & STAFF SUCCESS

- Recruit, retain, and ensure timely and equitable promotion and advancement of all faculty and staff.
- Cultivate a school climate that is welcoming to and inclusive of all faculty and staff.
- Ensure that SPDC leadership and decision-making structures provide inclusive and equitable access to information, processes, and policies, as well as opportunities for stakeholders to voice opinions and concerns.

ADVANCING RESEARCH & INTERDISCIPLINARY EFFORTS

- Advance our research discovery by continuing and expanding interdisciplinary collaborations within and beyond the school.
- Serve MSU's land-grant mission through applied research and outreach (local, state, national, and global).

MAINTAINING SUSTAINABLE STEWARDSHIP & ORGANIZATIONAL LONGEVITY

- Create a comprehensive communication plan to share a consistent, positive, and well-recognized identity with our stakeholders.
- Build a physical presence (Human Ecology & lab spaces) that aligns with our vision for a sustainable and healthy built, natural and virtual environment.
- Provide exemplary stewardship of institutional resources to foster the long-term sustainability of SPDC and its high-quality education, research, outreach and engagement programs.

ENROLLMENT

ACADEMIC YEAR 25-26

TOTAL ENROLLED: 674

75% Increase from 390 in Academic Year 2017-18

UNDERGRADUATE: 604

- Construction Management: 334
- Interior Design: 95
- Landscape Architecture: 105
- Urban & Regional Planning: 70

GRADUATE: 70

- M.S. in Construction Management: 6
- M.A. in Environmental Design: 15
- Master of Urban & Regional Planning: 23
- Master of International Planning Studies: 2
- Ph.D. Program: 24

46 FACULTY

12 Tenured, 9 Tenure-Track, 16 Specialists, 9 Part-Time Instructors

7 FULL-TIME STAFF



CONSTRUCTION MANAGEMENT

est. 1948

Bachelor of Science
in Construction Management

Master of Science
in Construction Management

Ph.D. Concentration
in Construction Management

Bachelor of Arts
in Interior Design

Master of Arts
in Environmental Design

Ph.D. Concentration
in Environmental Design

INTERIOR DESIGN

est. 1935

LANDSCAPE ARCHITECTURE

est. 1898

Bachelor of Landscape Architecture

Master of Arts
in Environmental Design

Ph.D. Concentration
in Environmental Design

Bachelor of Landscape
Architecture/Master of Arts
in Environmental Design
Dual Degree

Bachelor of Science
in Urban & Regional Planning

Master of Urban &
Regional Planning

Master of International
Planning Studies (online)

Ph.D. Concentration
in Urban & Regional Planning

URBAN & REGIONAL PLANNING

est. 1946

STUDENT SUCCESS

**ALL FOUR
PROGRAMS
RANKED TOP 20
NATIONALLY**

**96% JOB
PLACEMENT
WITHIN 2 YEARS
OF GRADUATION**

**REAL-WORLD
PROJECTS &
COMMUNITY
ENGAGEMENT**

SCHOLARSHIPS

With support from our endowments, SPDC awarded a total of **\$448,672** in scholarships to existing and incoming students during AY 25-26, including:

Construction Management **\$66,582**

Interior Design **\$38,572**

Landscape Architecture **\$291,508**

Urban & Regional Planning **\$52,010**



CLIMATE RESILIENT
COMMUNITIES & ADAPTATION

HOUSING INNOVATION &
COMMUNITY DEVELOPMENT

HEALTHY ENVIRONMENTS
FOR HUMAN WELL-BEING

ENVIRONMENTAL
& SOCIAL IMPACT



CORE SCHOLARLY AREAS OF RESEARCH & INNOVATION

SPDC is an **interdisciplinary hub** addressing challenges from the local to the global scale. We create sustainable and healthy environments across built, natural, and virtual spaces. As a leader in promoting innovative, sustainable, and resilient solutions through a focus on community engagement and advanced intelligent technology, SPDC's faculty expertise aligns with four core research areas, each contributing to **transformative impacts** in academia, industry, and society.

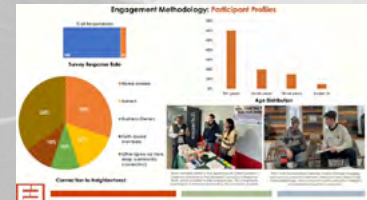
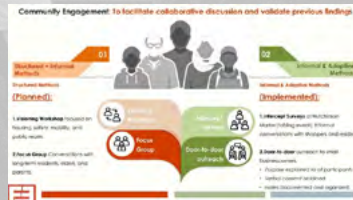
Since 2017, SPDC Faculty have secured over **\$36 million in external funding** and published nearly **400 peer-reviewed articles**, maintaining and enhancing our scholarly leadership and supporting innovative research agendas in our core scholarly areas.

COMMUNITY ENGAGEMENT

SPDC's research and academic output strongly aligns with MSU's land-grant mission through **practical engagement** with communities and **experiential learning** opportunities for students that promote sustainable and healthy growth state wide.

URP PLANNING PRACTICUM

A cornerstone of the Urban & Regional Planning program is its Capstone Practicum Course. Practicum allows faculty and students to work on community issues with community partners for an entire semester. It is the perfect example of service learning that exposes students to both the research and outreach side of planning issues.



DNR-MSU SUSTAINABILITY PARTNERSHIP

This partnership focuses on selected Michigan Department of Natural Resources (DNR) State Park or Recreation Areas. Students visit the sites, interact with DNR staff and apply principles from the classroom to the needs at the parks. Overall the project is guided by principles of economic development, exemplary green design, universal accessibility, community engagement, natural and cultural resource protection and education, and an outstanding visitor experience.



SUSTAINABLE BUILT ENVIRONMENT INSTITUTE

The Sustainable Built Environment Initiative (SBEI) offers graphic visioning process that provides citizens with a set of images and recommendations to guide improvements in their community with a sustainability theme.





NATIONAL CHARRETTE INSTITUTE

The National Charrette Institute (NCI) is a research program and institute within SPDC that is dedicated to transforming the way people work together by building capacity for collaboration



5 Guest Lectures: 70+ student attendees

4 Presentations at Conferences: 111+ attendees

3 Publications: 1 article, 1 dissertation, 1 book chapter

12 Trainings: 4 countries, 6 states 300+ participants, 3 partners

- U.S. Naval Facilities and Systems Command (NAVFAC)
- U.S. Army Corp of Engineers
- Tampa Bay Regional Planning Commission

10 Facilitations: 3 states, 6 partners

- Lansing Economic Area Partnership
- University of Missouri
- City of East Lansing
- Trowbridge Business Association
- Brooklyn College Foundation
- Construction Management Program (SPDC)

ACADEMIC YEAR
2025-26





DRAWING ACCLAIM

Landscape Architecture student Alice Finlan won an Honor Award for General Design, and two LA group projects (Group 1: John Benedetto, Anna Berry, Macy Compson, and Josh Kuhowski, Group 2: Jesse Le, Ryan Patterson, and Ava Yon) won Student Merit Awards from the Michigan Chapter of the American Society of Landscape Architects.

CHAMPIONING COMMUNITY

Construction Management student LaQuan Mack received the 2026 CANR You Belong Here Champion Award for his efforts to foster an inclusive, accessible and supportive environment.



EMBRACING CHALLENGES

The Interior Design Program collaborated with industry partner NBS Commercial Interiors to host an “express” Design Charrette and Competition.

Four student teams researched, planned, and designed an open office space and presented their concepts to a panel of three NBS judges, all in one afternoon.



RECOGNIZING EXCELLENCE

The School of Planning, Design and Construction ended the 2025-26 academic year by hosting the 4th annual SPDC Awards Ceremony.

This yearly event celebrates scholarship and academic award recipients across each of SPDC's four programs, allowing students and faculty from different disciplines to build community and connect as one school.

It also provides a platform to thank SPDC's donors and supporters for their generosity and encouragement, especially those in attendance.

EXPERIENCING THE LESSON PLAN

With support from the Peter & Linda Riguardi Travel Endowment, SPDC students visited active projects and historic sites in New York City.

Students from each program made the trip to see concepts from the classroom come to life in the real-world.

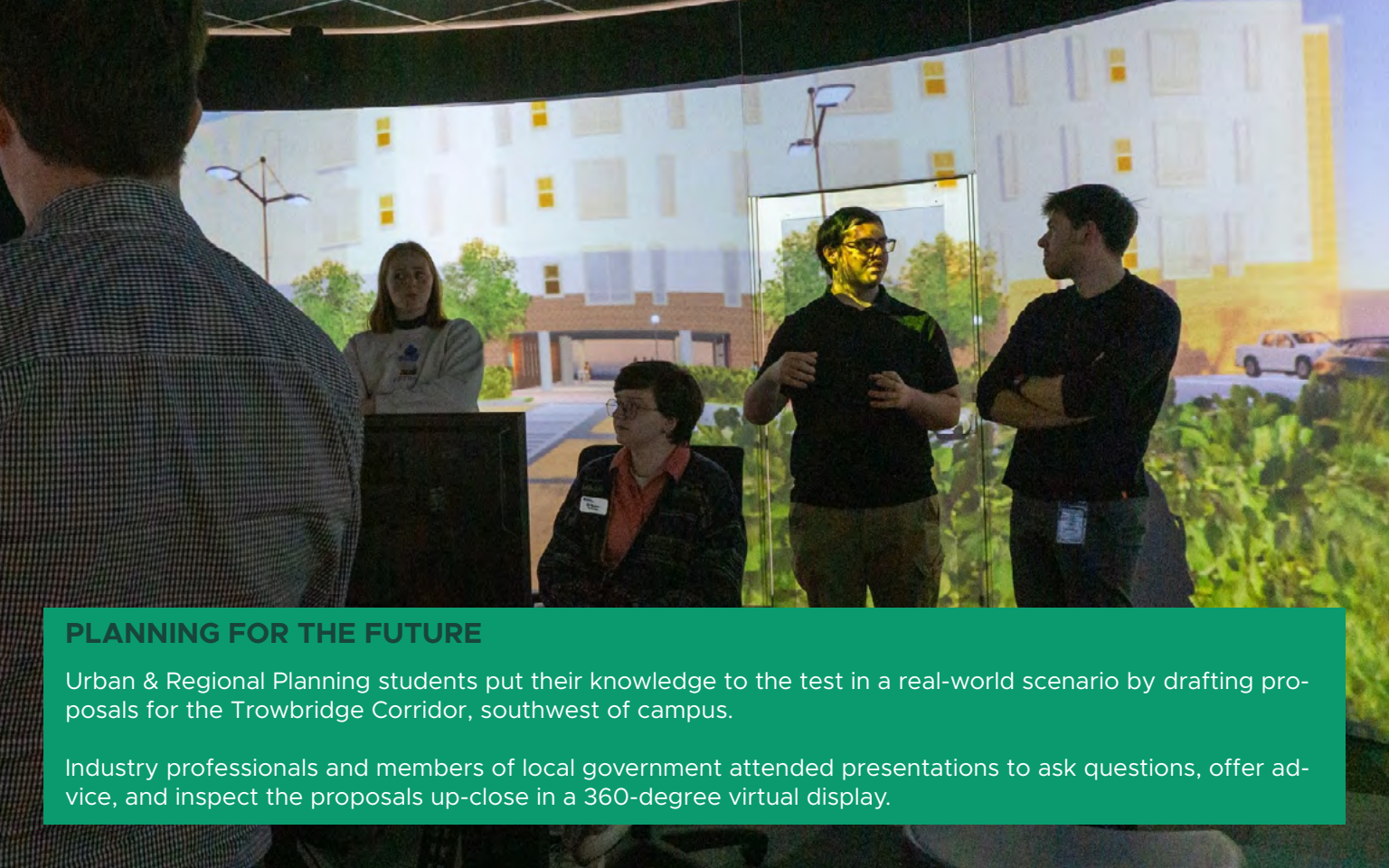




CONNECTING WITH PROFESSIONALS

Interior Design students visited Steelcase Global Headquarters for an immersive and inspiring learning experience. They toured the facility and testing lab, tried out numerous furniture pieces, and explored a wide variety of finishes — engaging with design hands-on and in real time.

This also gave students the opportunity to network with professionals across the company, learning about diverse career paths and gaining invaluable advice as they prepare for their own professional journeys.



PLANNING FOR THE FUTURE

Urban & Regional Planning students put their knowledge to the test in a real-world scenario by drafting proposals for the Trowbridge Corridor, southwest of campus.

Industry professionals and members of local government attended presentations to ask questions, offer advice, and inspect the proposals up-close in a 360-degree virtual display.

CREATING OPPORTUNITIES

Landscape Architecture supporter Patti Chipman received the 2026 CANR Honorary Alumni Award.

The award recognizes an individual whose lasting contributions to the college enhance lives and support meaningful efforts that strengthen the well-being of society.



ELEVATING DEDICATION

Landscape Architecture alumnus Bob Chipman received the 2026 CANR Alumni Service Award.

The award honors alumni who have demonstrated continuing outstanding volunteer service to MSU, the CANR or meritorious public service on a local, state, national or international level.



EDUCATION ABROAD

INTERIOR DESIGN ABROAD

Alternating between European and Asian destinations year-to-year, this summer education abroad program is a valuable opportunity for ID students to develop a global perspective. Participating students explore examples of both historic and contemporary architecture and interior design in unique cultural contexts.

LANDSCAPE ARCHITECTURE ABROAD

An integral part of the LA curriculum, participating students visit historic and current examples of international landscape architecture each spring semester. Meaningful, immersive, and experiential - including visits to professional offices and foundational settings of the profession - this program is endowed with generous financial support, making it affordable for all LA students.

EUROPEAN PLANNING & PRACTICE

Designed for URP students with an interest in cities, design, and sustainability, this program examines the challenges and development issues of planning and urban redevelopment in European cities.





MAKE AN
IMPACT

GIVING TO SPDC

The School of Planning, Design and Construction is proud to provide our students with both **world-class instruction** in and **practical application** of the necessary skills today's built environment industries demand. Your donations help SPDC continue our storied history as a leader in the Construction Management, Interior Design, Landscape Architecture, and Urban & Regional Planning disciplines.

With the gracious support of and donations from our alumni and friends, SPDC's students can always expect access to **leading technologies** as well as one-of-a-kind **student engagement opportunities**, from **education abroad** to attendance at **national industry conferences**.

In addition to supporting **excellence in the classroom**, your donations help SPDC develop **cutting-edge research** opportunities that strengthen the reputation of our already storied programs and provide students the ability to work on **real-world projects**.



visit spdc.msu.edu



School of Planning, Design and Construction
MICHIGAN STATE UNIVERSITY